

# Welcome to FOOL 18 Things Odin Knows

Welcome to Bryniau Tywynnog's annual hands-on A&S event. We'd like to make some general announcements here. Camp Impessa has worked very, very hard the last couple of years to improve the site, and it shows. We want to continue using this site, so please help us be good tenants.

This is a DRY site, which means no alcohol. Staff reserves the right to eject participants who fail to abide by this policy.

To help ease the parking issues, please obey the instructions of the parking staff in the high-visibility vest. Please follow the one-way signs and use the road. If possible, pull off the road into your camping area. If not, pull to the side to allow others to pass.

NO fire pits! Please use the communal ones marked on the map or your own raised ones that leave no trace.

Please take your garbage and recycling with you. There are bins on site, Scouts pay to empty them and have always requested we take our bags with us.

Water is potable; please be respectful of its use. Showers should be short! We are on a well and a cistern and will deplete them if we are not careful.

ABSOLUTELY do not wash your dishes in the bathroom. The kitchen in Anniki is available for your use. Feel free to use it when classes are not in session.

We provide the toilet paper and paper towels. If we are running low, please see Gate, the staff cabin or any staff member.

Please do not flush things other than toilet paper down the toilet. This can cause a back up and unpleasant clean up for staff.



## Safety

Camp Impessa is located on 52 acres of fairly rough wilderness. This means the wild animals, including ticks and mosquitoes are a concern to you and yours.

Coyotes have been spotted in the area. It is our recommendation that small children are not left unsupervised and should not be using the trails without adult supervision.

Depending on the weather, ticks and mosquitoes may be present. Please use bug spray and do regular tick checks on yourself, your family, and your friends.

## Emotional Support and Service Animals

FOOL and Camp Impeesa have always allowed registered service animals on site. These are dogs that are "individually trained by an organization or person specializing in service dog training to perform a task to assist a person with a need related to their disabilities." You might be familiar with a guide dog for someone who is blind.

However, NO pets are allowed on site. This included dogs, cats, snakes, hedgehogs, llamas, elephants, etc. Staff does reserve the rights to all snails, monkeys, wombats, penguins, and pandas.

Emotional support animals are not covered under the AoDA, and we, therefore, classify them as pets

## Staff List

Rylyn Buchanan  
Autocrat



Odette de St. Remy  
Autocrat



Catriona inghen Ragnail  
Gate



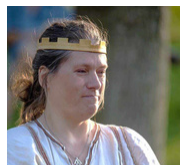
Christiana Macnamara  
class payments



Daniel of Whitby  
Parking lot staff



Liör Lang-Akason  
Bunk reservations

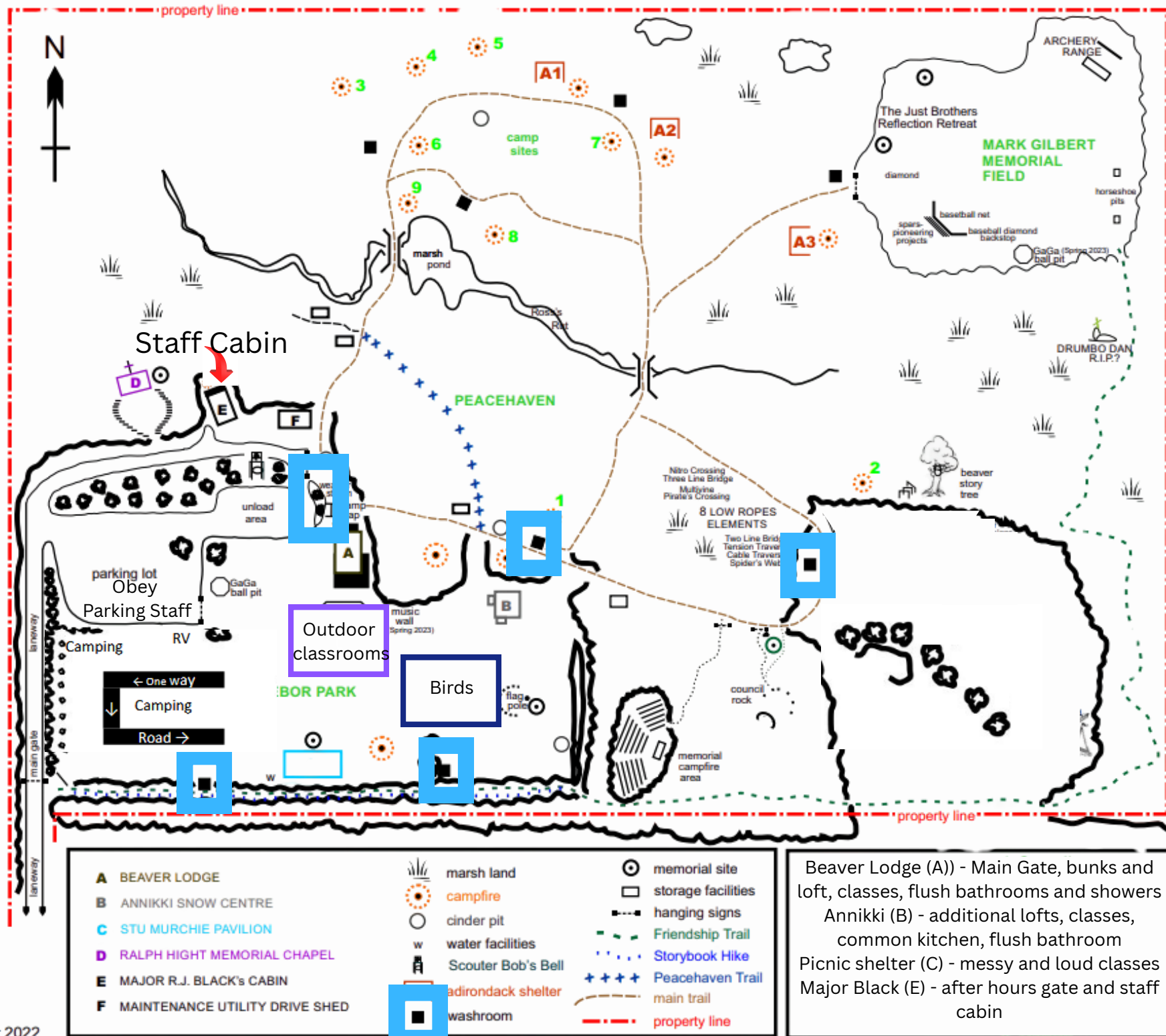


Percival de la Rocque  
is taking a year off



**Ask a staff member what a cresset is!!**

# map of SCOUTS CANADA - CAMP IMPEESA



Beaver Lodge (A) - Main Gate, bunks and loft, classes, flush bathrooms and showers  
 Annikki (B) - additional lofts, classes, common kitchen, flush bathroom  
 Picnic shelter (C) - messy and loud classes  
 Major Black (E) - after hours gate and staff cabin